

MARSHALL



2023

MARSHALL

Device Config (SMA)



1.0 Device Configuration

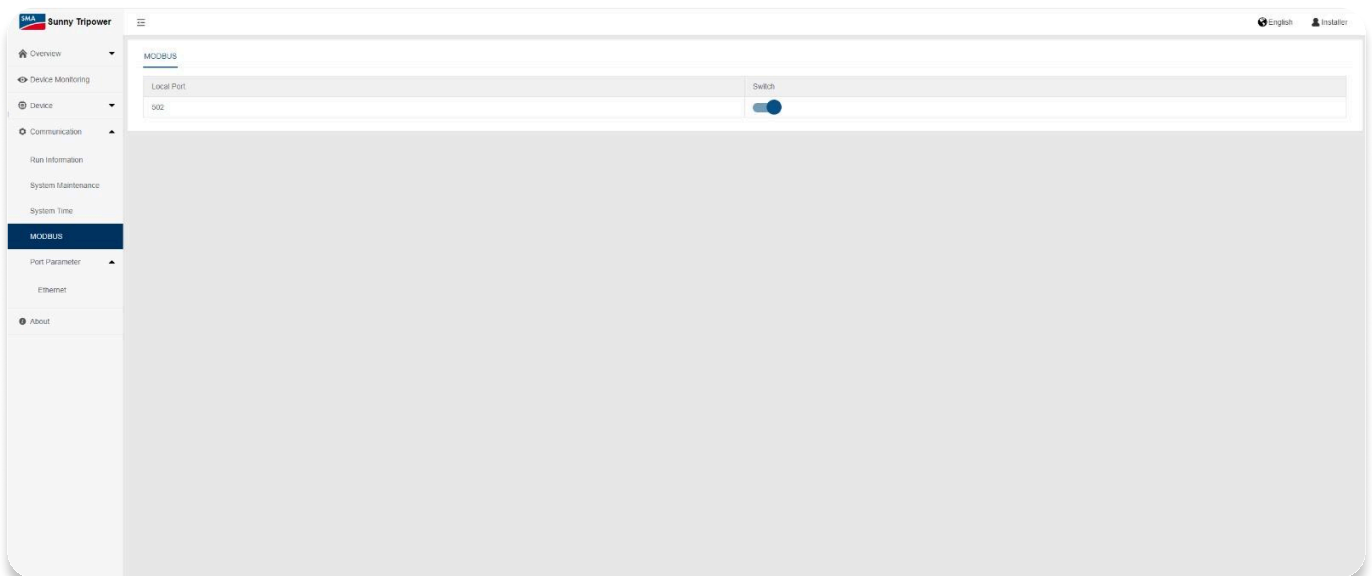
Part A

SMA CORE2 Inverters

Before interfacing the inverter with the Marshall gateway device, change the inverter configuration to the following. Failure to change the inverter configuration may result in loss of communication between the Marshall device and the inverter.

a. Inverter MODBUS Control

1. Switch Enable/Disable of Local Ports.



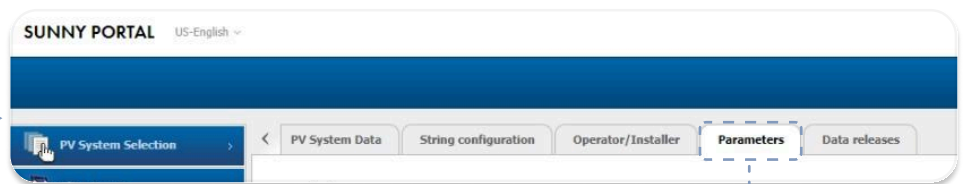
Sunny Portal Login

2. Follow the process as below to set up limiting of the active power feed-in.

(Sunny Portal Login is only needed if they have a SMA Home Manager on the site.)



① Go to PV System Properties.



② Select the Parameters Tab. Scroll down and select the edit button to enable editing.

Limiting of the active power feed-in

According to requirements of your grid operator, the Sunny Home Manager can ensure that surplus PV energy is fed into the utility grid only up to a defined limit. i

Limiting to:

- A fixed value of the nominal system power in kW i
- A percentage of the nominal system power i
- External setpoints i
- Zero Export i

Information:

- The system operator is responsible for the accuracy of the information on limiting the active power feed-in and the nominal system power.
- Ensure that your feed-in meter complies with the requirements. i

Limiting of the active power feed-in
no limiting of the active power feed-in

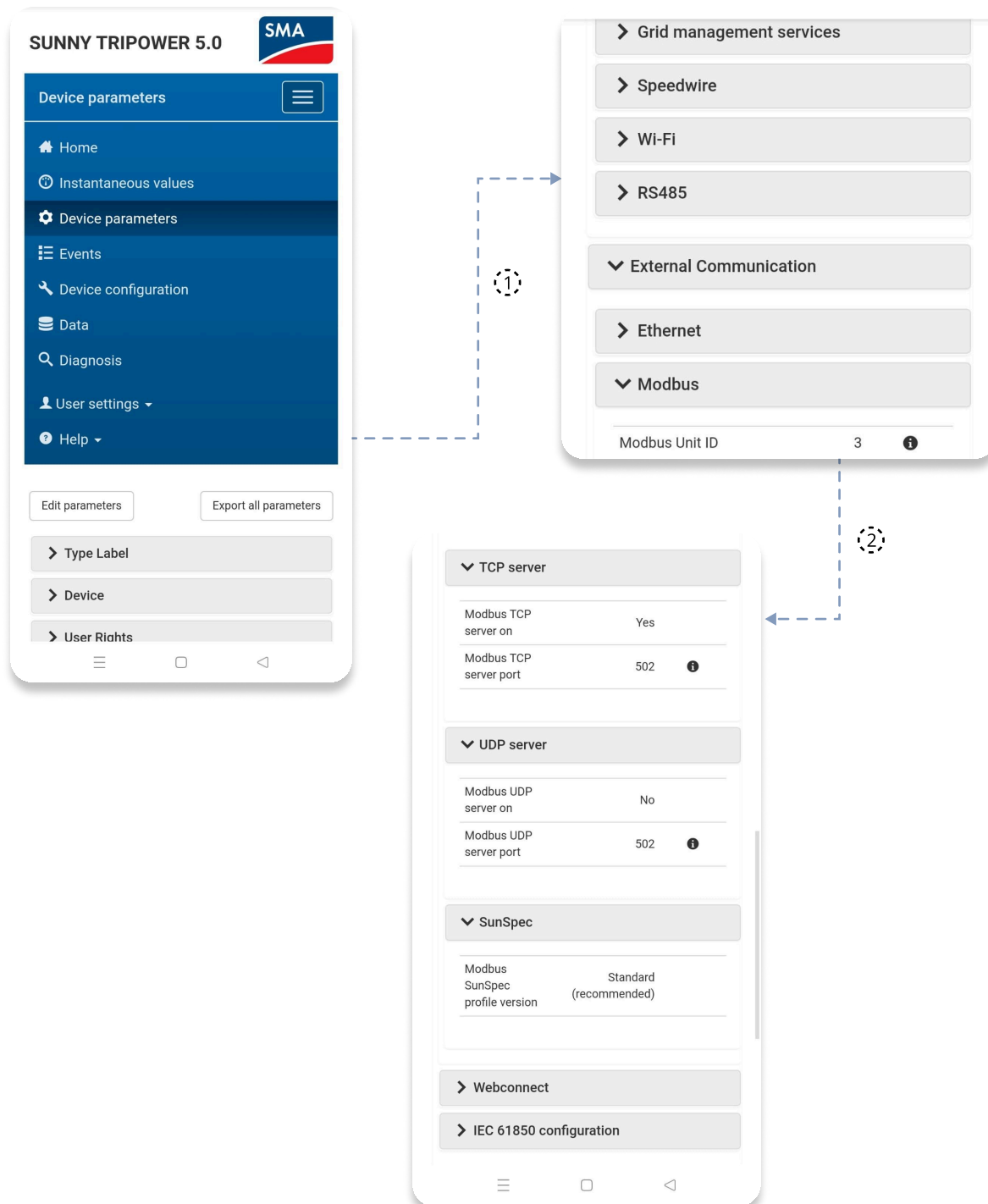
③ Set the limiting of the active power feed-in to "no limiting of the active power feed-in".

2.0 Device Configuration

Part B

SB STP STP50-41

1. Follow the process as below to set up SB STP STP50-41.



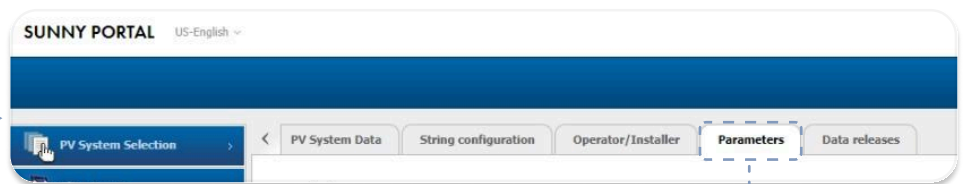
Sunny Portal Login

2. Follow the process as below to set up limiting of the active power feed-in.

(Sunny Portal Login is only needed if they have a SMA Home Manager on the site.)



① Go to PV System Properties.



② Select the Parameters Tab. Scroll down and select the edit button to enable editing.

Limiting of the active power feed-in

According to requirements of your grid operator, the Sunny Home Manager can ensure that surplus PV energy is fed into the utility grid only up to a defined limit. i

Limiting to:

- A fixed value of the nominal system power in kW i
- A percentage of the nominal system power i
- External setpoints i
- Zero Export i

Information:

- The system operator is responsible for the accuracy of the information on limiting the active power feed-in and the nominal system power.
- Ensure that your feed-in meter complies with the requirements. i

Limiting of the active power feed-in
no limiting of the active power feed-in

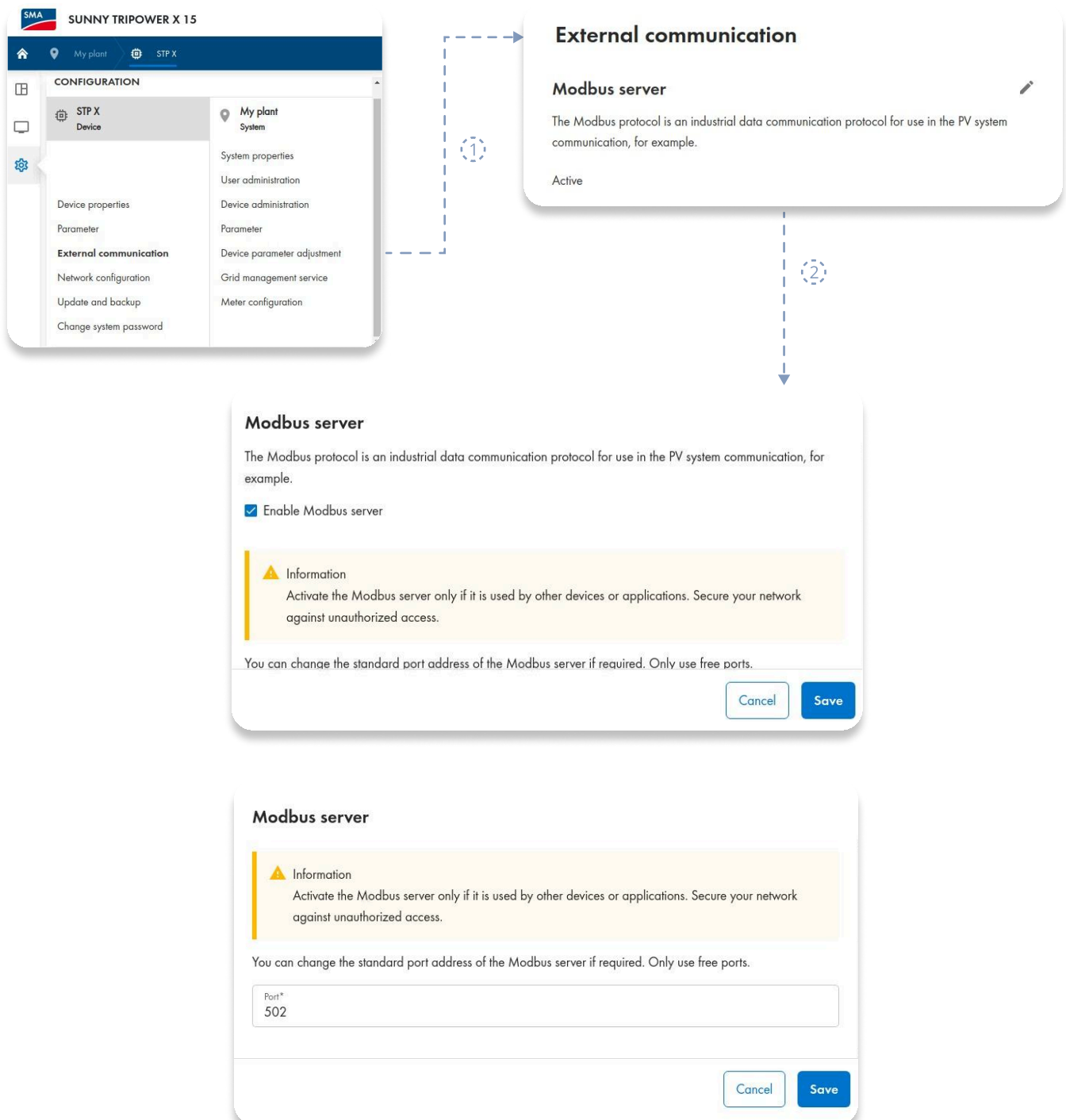
③ Set the limiting of the active power feed-in to "no limiting of the active power feed-in".

3.0 Device Configuration

Part C

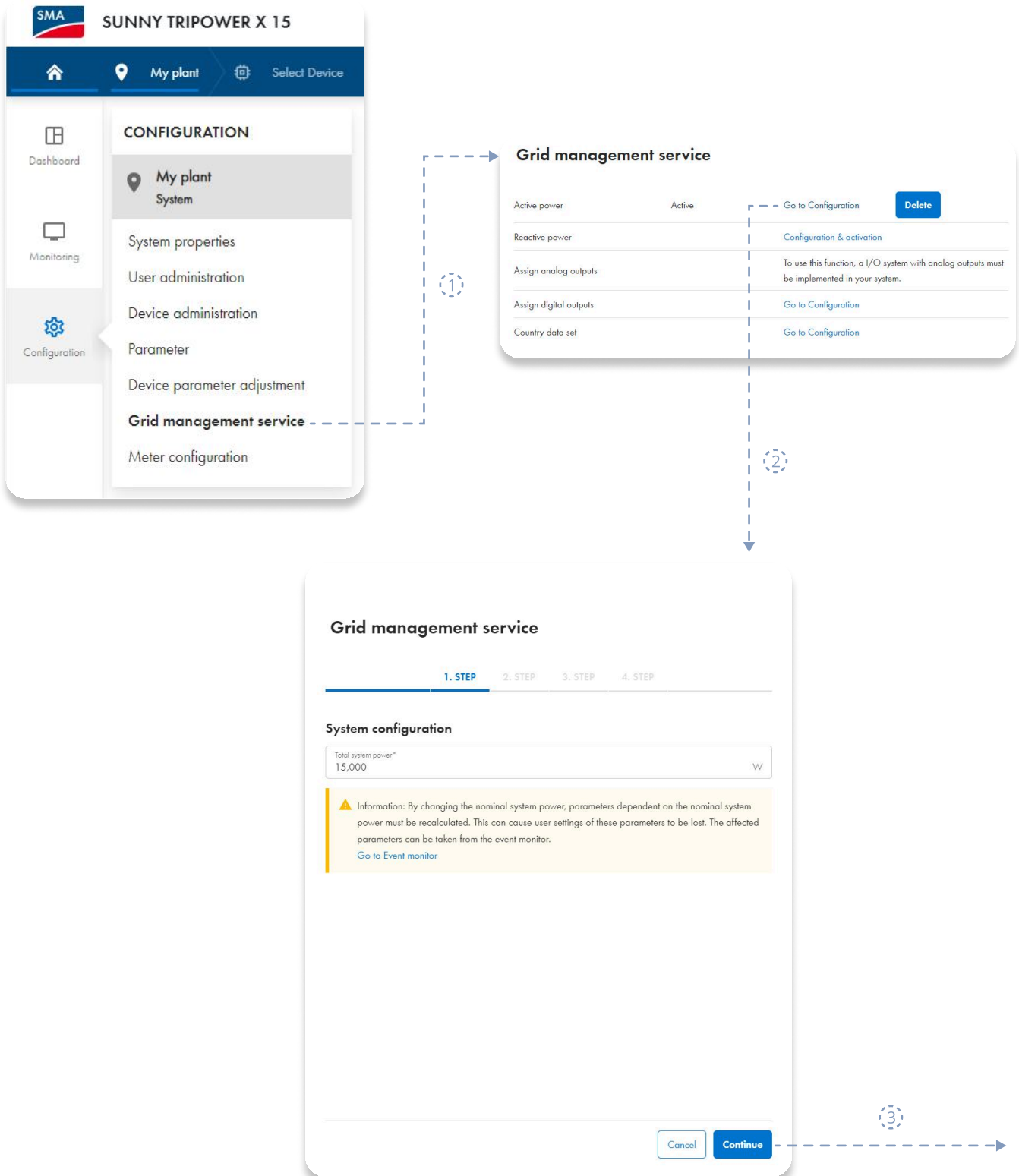
Sunny Tri Power x 12 15 20 25

1. Follow the process as below to set up Sunny Tri Power x 12 15 20 25.



Grid Management Service

2. Follow the process as below to set up Grid Management Service.



Grid management service ⓘ

1. STEP 2. STEP 3. STEP 4. STEP

Select operating mode

Operating mode*

- Open loop control
- Closed loop control

Selecting the setpoint

Signal sources*

- Analogue inputs
- Manual control
- Digital inputs
- Modbus

If your system participates in the direct selling, you can activate the necessary interface here in the communication device.

Direct selling interface:

Cancel Previous Continue

Grid management service ⓘ

1. STEP 2. STEP 3. STEP 4. STEP

Modification speed of the setpoint

Active

Setting time* 1 s

Active power gradient* 1,000 %/s

Cancel Previous Continue

Grid management service

1. STEP 2. STEP 3. STEP 4. STEP

Fallback

Behavior during failure of remote control connection

External active power setting 2, fallback behavior

Cancel Previous Save

Sunny Portal Login

3. Follow the process as below to set up limiting of the active power feed-in.

(Sunny Portal Login is only needed if they have a SMA Home Manager on the site.)

The image shows two screenshots of the Sunny Portal interface. The left screenshot shows the main menu with 'Configuration' selected. The right screenshot shows the 'Parameters' tab selected in the top navigation bar. Dashed arrows and numbered callouts indicate the navigation steps.

① Go to PV System Properties.

② Select the Parameters Tab. Scroll down and select the edit button to enable editing.

The image shows the 'Limiting of the active power feed-in' settings page. It includes a title, an introductory paragraph, and two sections: 'Limiting to:' and 'Information:'. At the bottom, there is a dropdown menu with 'no limiting of the active power feed-in' selected. A dashed arrow and callout point to this selection.

Limiting of the active power feed-in

According to requirements of your grid operator, the Sunny Home Manager can ensure that surplus PV energy is fed into the utility grid only up to a defined limit. ⓘ

Limiting to:

- A fixed value of the nominal system power in kW ⓘ
- A percentage of the nominal system power ⓘ
- External setpoints ⓘ
- Zero Export ⓘ

Information:

- The system operator is responsible for the accuracy of the information on limiting the active power feed-in and the nominal system power.
- Ensure that your feed-in meter complies with the requirements. ⓘ

Limiting of the active power feed-in: no limiting of the active power feed-in

③ Set the limiting of the active power feed-in to "no limiting of the active power feed-in".

MARSHALL

datamarshall.au

03 4422 4455

support@datamarshall.au

ZECO Energy

6C/148 Chesterville Road,
Moorabbin
VIC Australia 3189

A.B.N 16 111 222 456