

MARSHALL



2025

INSTALLATION GUIDE

MARSHALL – NOARK INTEGRATION

Marshall Noark Integration Installation Manual

This installation manual shows how to connect the communication cable between the Noark inverters and the Marshall device.

Single Phase Hybrid Inverter:

Ex9N-DH-3KS1-AU

Ex9N-DH-5KS-AU

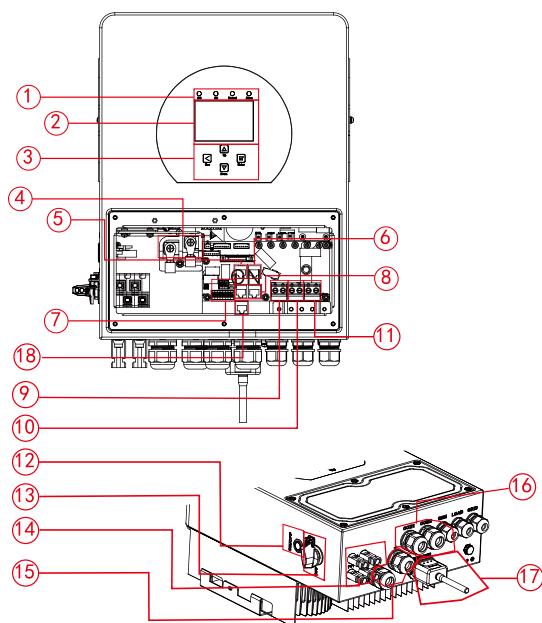
Ex9N-DH-3KS-AU

Ex9N-DH-6KS-AU

Ex9N-DH-3.6KS-AU

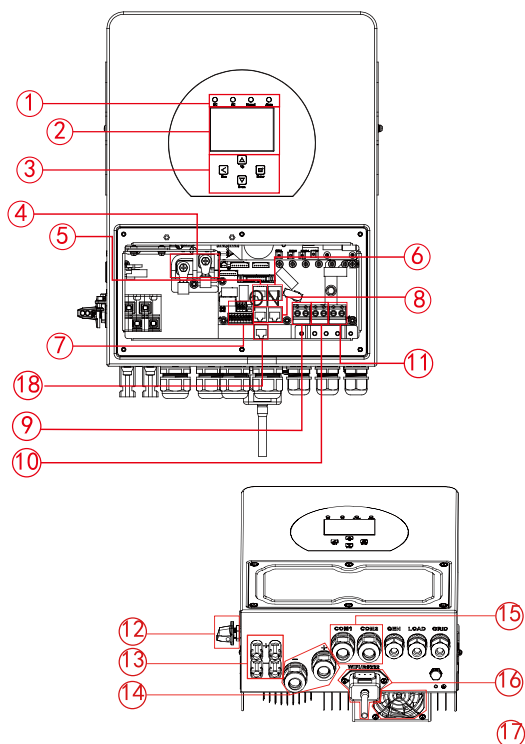
For the above models, the RS485 external communication interface and the BMS CAN interface are sharing the same RJ45 port, connect Marshall device with the inverter through RS485/CAN port.

Ex9N-DH- (3KS1-5KS) - AU



- | | | |
|-----------------------------|-------------------------|----------------------------|
| 1: Inverter Indicators | 6: Meter Port | 13: DC Switch |
| 2: LCD display | 7: Function Port | 14: PV input with two MPPT |
| 3: Function Buttons | 8: Parallel port | 15: Battery |
| 4: Battery input connectors | 9: Generator input | 16: Temperature sensor |
| 5: RS485/CAN Port | 10: Load | 17: WiFi Interface |
| | 11: Grid | 18: DRM Port |
| | 12: Power on/off button | |

Ex9N-DH-6KS - AU

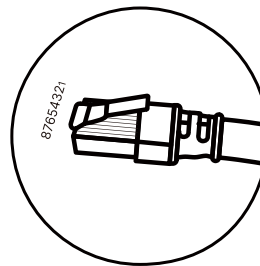
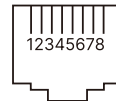


- | | | |
|-----------------------------|--------------------|----------------------------|
| 1: Inverter Indicators | 6: Meter Port | 13: PV input with two MPPT |
| 2: LCD display | 7: Function Port | 14: Battery |
| 3: Function Buttons | 8: Parallel port | 15: Temperature sensor |
| 4: Battery input connectors | 9: Generator input | 16: WiFi Interface |
| 5: RS485/CAN Port | 10: Load | 17: Fan |
| | 11: Grid | 18: DRM Port |
| | 12: DC Switch | |

Make the RJ45 connector following the definition of RJ45 port pin shown below:

Definition of RJ45 Port Pin for BMS

No.	RS485/CAN Pin
1	485_B
2	485_A
3	GND_485
4	CAN-H
5	CAN-L
6	GND_485
7	485_A
8	485_B



Connect 485_B to Marshall 485 B port and connect 485_A to Marshall 485 A port. Can-H and CAN-L are reserved for the battery BMS connection.

Three Phase Hybrid Inverter:

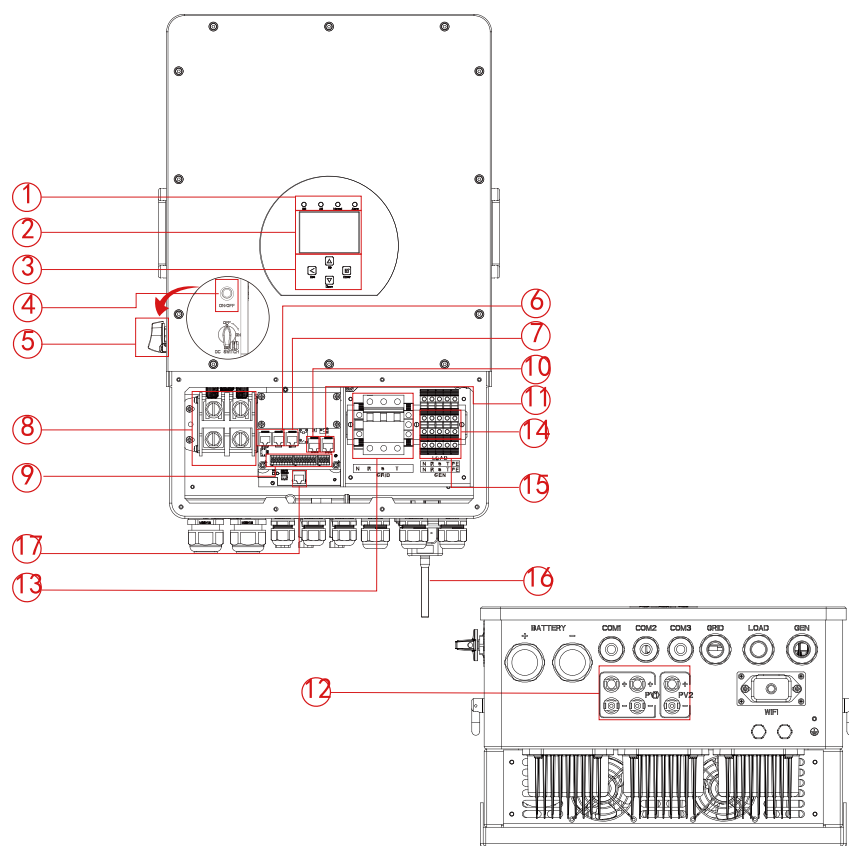
Ex9N-DH-5KT-AU

Ex9N-DH-10KT-AU

Ex9N-DH-6KT-AU

Ex9N-DH-12KT-AU

Ex9N-DH-8KT-AU



1: Inverter indicators

2: LCD display

3: Function buttons

4: Power on/off button

5: DC switch

6: Parallel port

7: Meter-485 port

8: Battery input connectors

9: Function port

10: Modbus port

11: BMS port

12: PV input with two MPPT

13: *Circuit breaker of Grid

14: Load

15: Generator input

16: WiFi Interface

17: DRM port

* for some hardware versions, the circuit breaker of Grid is not existed

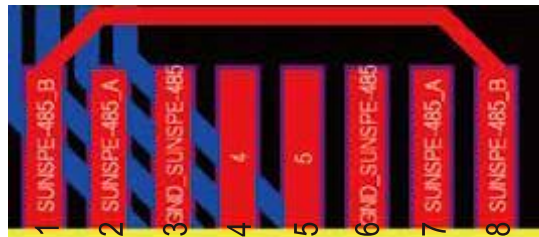
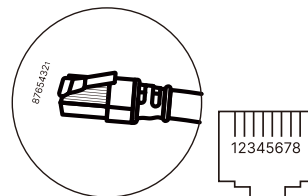
For the three-phase hybrid inverters, connect the Marshall device to the inverter through port 10 which named Modbus port.

Make one RJ45 connector on one side of the LAN cable following the definition of RJ45 port pin of the Modbus port:

Definition of RJ45 Port Pin of "Modbus port" for remotely monitoring

No.	Modbus port
1	485_B
2	485_A
3	GND_485
4	--
5	--
6	GND_485
7	485_A
8	485_B

Modbus port

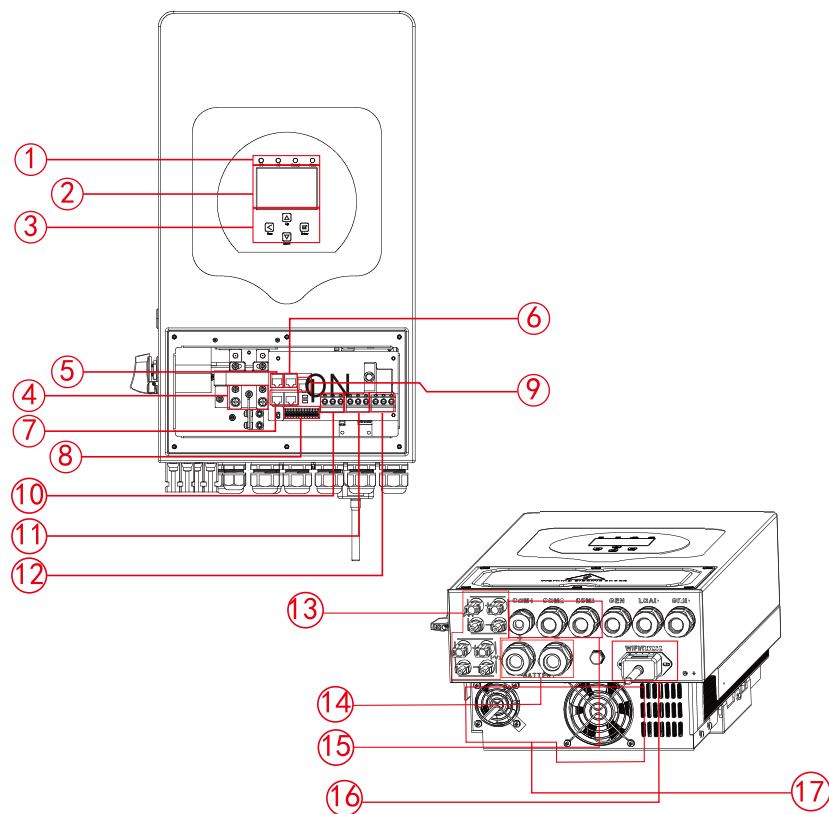


Connect 485_B to Marshall 485 B port and connect 485_A to Marshall 485 A port.

Three Phase Hybrid Inverter:

Ex9N-DH-7.6KS-AU

Ex9N-DH-8KS-AU



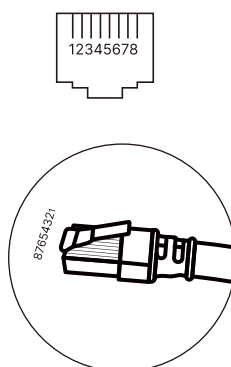
- | | | |
|--|---------------------|----------------------------|
| 1: Inverter Indicators | 7: Parallel port | 13: PV input with two MPPT |
| 2: LCD display | 8: Function Port | 14: Battery |
| 3: Function Buttons | 9: DRMs Port | 15: Temperature sensor |
| 4: Battery input connectors | 10: Generator input | 16: WiFi Interface |
| 5: RS 485 Port | 11: Load | |
| 6: BMS 485/CAN Port | 12: Grid | |
| 17: fan (*Note: For some hardware version, it doesn't have this fan) | | |

For the above models, the RS485 external communication interface and the BMS CAN interface are sharing the same RJ45 port, connect Marshall device with the inverter through BMS 485/CAN port.

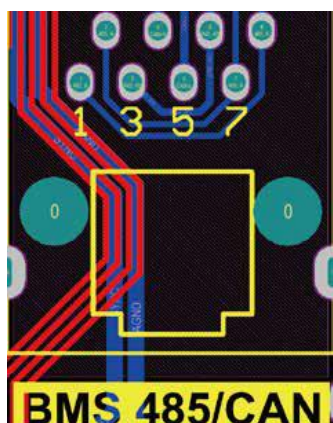
Make the RJ45 connector following the definition of RJ45 port pin shown below:

Definition of RJ45 Port Pin for BMS 485/CAN.

No.	BMS 485/CAN Pin
1	485_B
2	485_A
3	GND_485
4	CAN-H
5	CAN-L
6	GND_485
7	485_A
8	485_B



BMS 485/CAN Port



Connect 485_B to Marshall 485 B port and connect 485_A to Marshall 485 A port. Can-H and CAN-L are reserved for the battery BMS connection.

MARSHALL

datamarshall.au

03 4422 4455

support@datamarshall.au

ZECO Energy

6C/148 Chesterville Road,
Moorabbin
VIC Australia 3189

A.B.N 16 111 222 456